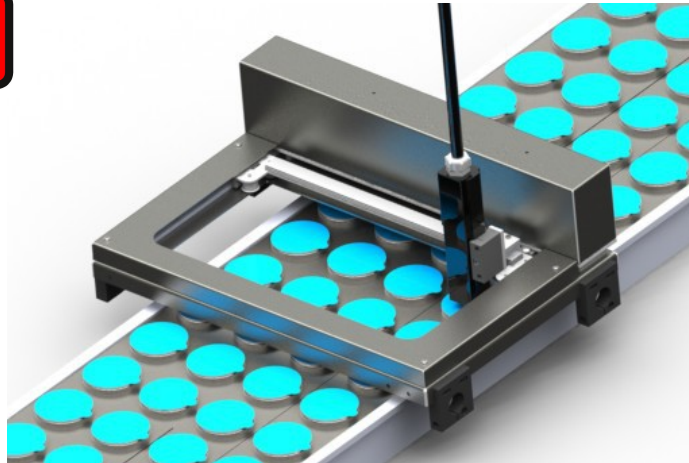


TRAVERSER **2S** TWIN

X-Y Traverser for Continuous and Thermal Inkjet



A Traverser provides a means by which a print head can traverse a production line instead of operating statically. The Twin Axis Traverser allows movement in 2 directions to allow multiple rows of products to be printed in a single cycle.

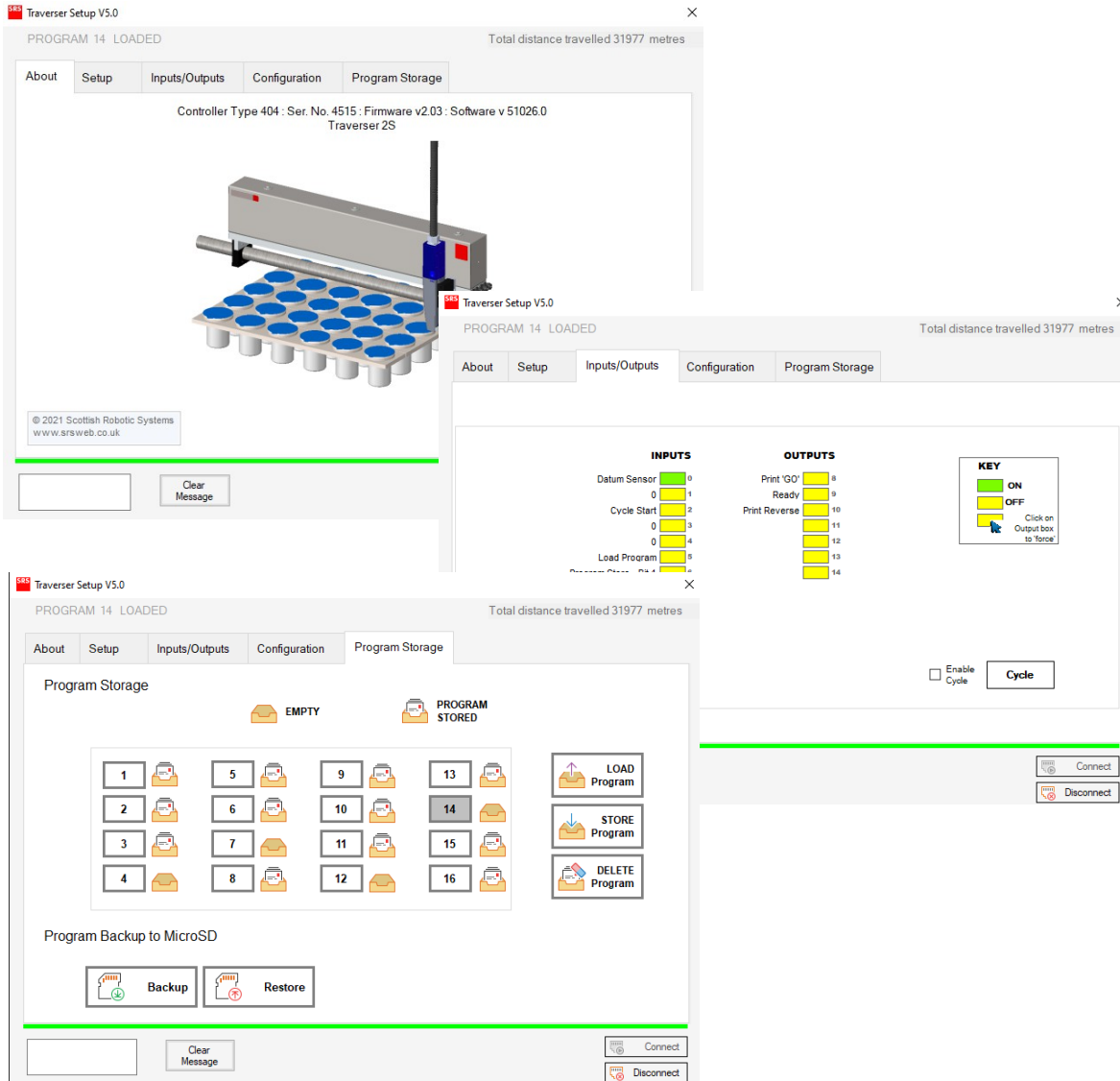
MAIN FEATURES

- Programmable to allow multiple prints to be made on each cycle and modify dynamic properties to match line requirements.
- IP65 as standard, all controls are built into the axis eliminating the need for a separate control box and cabling.
- Encoders on both axes for position feedback, which will detect and correct stalls or crashes.
- Reliability - All electrical components are PCB mounted, so fewer components and fewer wires means higher reliability and easier fault finding.
- Program storage for up to 16 programs, selectable by host machine, selector switch or PC.
- Programs can be backed up to MicroSD card
- Compatible with all Domino i-tech, Ax and Gx models (Additional dovetail mount plate required for Gx)
- All units are custom built to suit requirements of application – no standard stroke lengths
- High Performance model for very demanding cycle requirements and multi-head applications



SETUP SOFTWARE

PC based set-up software is supplied to allow dynamic and printing parameters to be configured to suit the requirements of each installation.

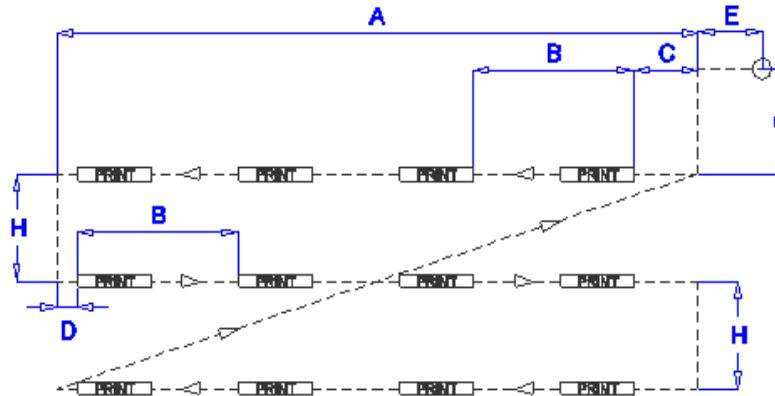


OPERATION

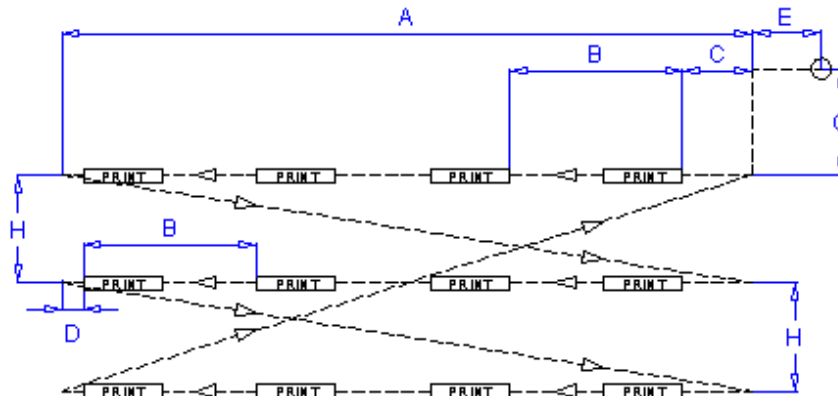
The Twin Axis Traverser moves the print-head parallel to the control box, across the product/s whilst they are stationary. Print Go signals are issued to the printer as it is moving on a user programmed pitch. The Twin Axis Traverser can then index perpendicular to the control box on a set pitch to create rows of prints, the number of rows and the pitch of the rows is programmed by the user.

Print Mode

-'Print BOTH Ways'- Prints in both directions of travel. Requires print reverse cable



-'Print ONE way only'- Sets the Traverser to print in only one direction with a diagonal move between rows



Printing both ways results in a faster cycle with less axis travel but requires additional cables and an IO port on the printer

Print/Row Pitch

Prints can be set to have

Program Select

Up to sixteen programs can be stored in the Traverser.

These can be selected by:

- Setup software
- Program Select Switch
- Using external IO from host machine

Programs can be saved to MicroSD card, useful for duplicating settings to another Traverser or for controller replacement

PERFORMANCE

Speed:	Programmable from 10 mm/s up to 1000 mm/s
Acceleration:	Programmable from 500 mm/s/s up to 10000 mm/s/s
Duty Cycle:	100%

ENVIRONMENT

Temperature Range:	5-40°C
Humidity:	10 – 90% RH (non condensing)
Electrical Requirements:	Single Phase, 100-240 VAC, 50/60 Hz, 40VA
Protection:	All units are IP65 rated
Operating Noise:	<70 dB(A)

CONSTRUCTION

Traversers are constructed using stainless steel and anodised aluminium.

INPUTS

- Cycle Start
- 4 binary program select inputs allow 1 of 16 stored programs to be selected
- Program select input to initiate program change following change of binary inputs
- Encoder input available for lane changer operation (Not supplied as standard)

OUTPUTS

- Print Go
- Ready (Contact closure rated 2A 30vdc)
- Virtual Encoder (maintains print width during acceleration/deceleration)
- Print Reverse

STANDARD COMPONENTS

The following parts are supplied as standard

- Software USB drive and MicroSD card
- Operation and maintenance manual
- Ethernet cable
- Print Go/Encoder cable

PRINT GO AND ENCODER CABLE

Print Go/Encoder cables are available to suit both i-tech/Ax and Gx printers

i-tech/Ax



Printer	Part No.	Domino Part No.
Ax /i-tech	T10810	EPT071897

Gx

Print Go/Print Reverse

A



B



Printer	Cable	Part No.	Domino Part No.
Gx150i	A	T10821	EPT071898
Gx350i/Gx OEM	B	T10819	EPT071899

Encoder



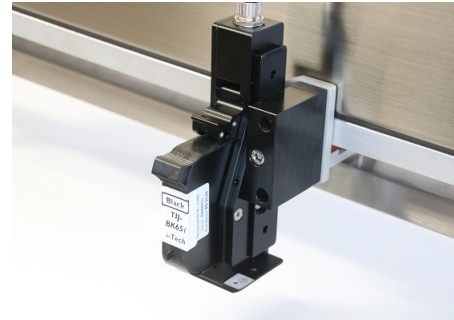
Printer	Part No.	Domino Part No.
Gx150i/Gx350i/Gx OEM	T10818	EPT071900

ACCESSORIES

Gx DOVETAIL MOUNT PLATE

The Gx dovetail mount plate is used to fit a Gx printhead to the standard traverser dovetail block.

Part No	Description	Domino Part No
T10820	Gx Dovetail Mount Plate	EPT071904

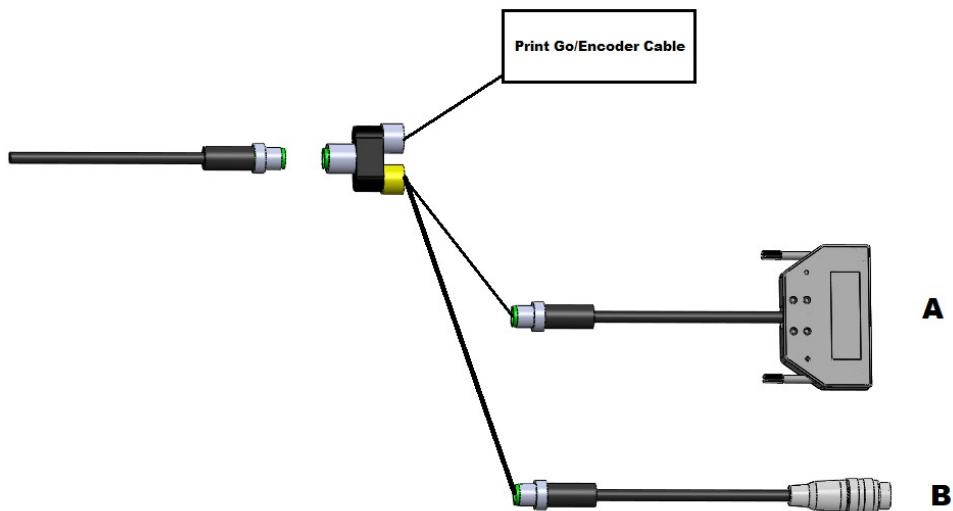


PRINT REVERSE CABLE

The printer must be set up for bidirectional printing as described in printer setup section

The Print Reverse cable is not supplied as standard and will need to be ordered separately. A splitter (Y-branch) will also be required if using Print Reverse.

Note: **Gx – Print Reverse included in Print Go cable**



Printer	Cable	Part No.	Domino Part No.
I-tech and Ax (Extended IO Pack) 37Way	A	T10351	28877
I-tech and Ax (Extended IO Pack) 37Way IP65	A	T10584	
Ax (GPIO Pack) 14Way IP65	B	T10585	EPT071905

Part No	Description	Domino Part No.
T10197	Splitter	28870



PRINTER CABLE EXTENSION

The cable which takes Print Go, Encoder and Print reverse signals from the Traverser to the Domino A-Series is 3m long. Extension cables are available, with a length of 2m. If necessary, more than one of these cables can be joined end to end.

Part No	Description
T10204	Extension Cable (2m)



PROGRAM SELECTOR

Program selector switch boxes are available with either 8 or 16 position rotary switches.

To change program:

- Turn Selector to required program number
- Press the pushbutton to initiate the change

The program selector switch box is supplied with 3m cable, if a longer cable is required 2m extension cables are available.



Part No.	Description
T10207	Program Selector 8 Programs
T10204	Extension Cable (2m) 8 Programs
T10727	Program Selector 16 Programs
T10844	Extension Cable (2m) 16 Programs

FOOT-SWITCH

If the Traverser is to be operator triggered a simple foot-switch is available, this switch can also be hand operated if necessary.

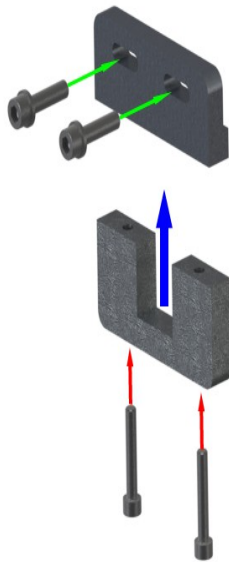
Part No	Description
T10205	Foot-switch



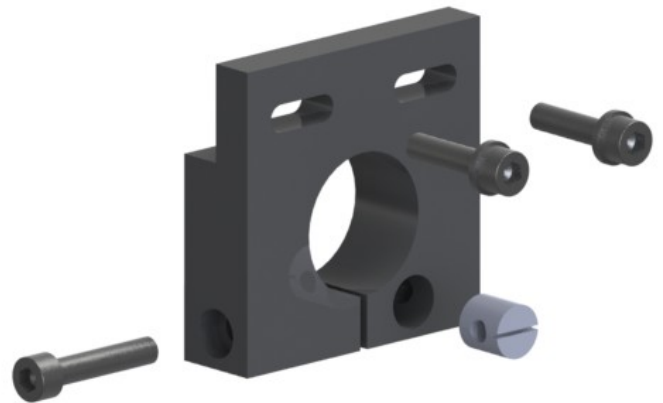
MOUNTING BRACKET OPTIONS

Mounting brackets are available to mount the Twin Axis Traverser on either 32mm diameter round tubing or 25mm square tubing.

- 32mm diameter brackets mount directly to standard Domino mounting system.
- 25mm square brackets mount onto mounting system available separately.



T10220



T10230

T10220 Twin axis 25mm Mounting kit consists of 4 sets of brackets as shown above. The brackets are slotted to allow adjustment.

T10230 Twin axis 32dia mounting kit consists of 4 brackets as shown above. The brackets are slotted to allow adjustment.



Twin Axis traverser mounted on 32mm diameter rail

Part No	Description
T10220	Mounting Clamps 25x25mm (4)
T10230	Mounting Clamps 32mm diameter (4)

MOUNTING SYSTEM

A 25mm rail mounting system is available as a goalpost kit in 2 different widths. Usually 2 of these kits would be required to mount a twin axis traverser

T10161 Goalpost system 1m wide.

Contents: 3x 1 metre long 25x25mm stainless steel tubes.
2x 90deg clamp blocks.
2x pedestal clamps.
4x end caps.

T10162 Goalpost system 1.5m wide.

Contents: 2x 1 metre long 25x25mm stainless steel tubes.
1x 1.5 metre long 25x25mm stainless steel tubes.
2x 90deg clamp blocks.
2x pedestal clamps.
4x end caps.

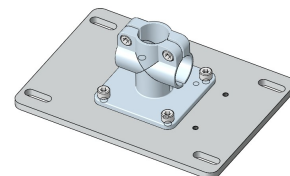
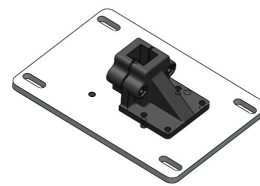
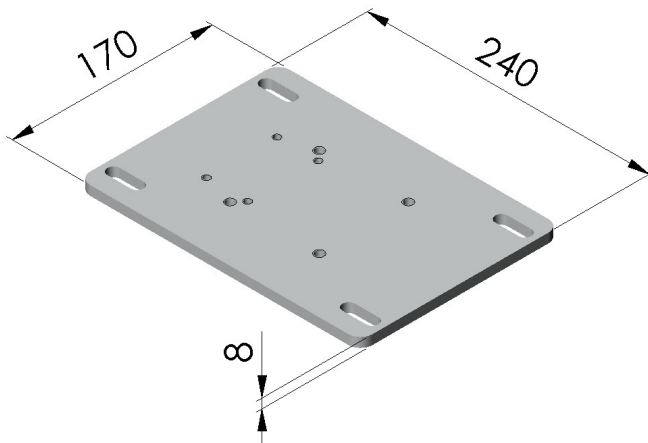


Individual mounting system components and lengths of rail available on request.

Part No	Description
T10161	Goalpost system 1m wide
T10162	Goalpost system 1.5m wide

MOUNTING SYSTEM BASE PLATES

Mounting System Baseplates fit beneath pedestal clamps and can be bolted to the floor or an other surface. Slots allow the position of the mounting system to be varied by +/-10mm. These plates are suitable for use with Domino 32mm diameter floor/wall mount clamps (5-0161126) and 25mm pedestal clamps detailed previously.



The Plates are manufactured from 8mm thick steel plate and treated with a durable powder coat finish. Also available manufactured from Stainless Steel

Part No.	Description
T10206	Mounting System Base Plates (Pair)

T10250	Mounting System Base Plates Stainless Steel (Pair)
--------	--

CONDUIT SUPPORT

The conduit support kit is used to hang the conduit from a suitable fixing point above the Traverser. It supports the Conduit while also allowing the conduit to move when the traverser cycles

The Conduit Support kit consists of an adjustable length polyurethane hanger, aluminium adjustment and tensioning collars, a stainless steel snap ring to release the mounting and a stainless steel loop bracket. The loop bracket can be fitted to a suitable flat surface or used with an optional bracket to attach to either 25mm x 25mm rail or 32mm diameter rail.

Item	Part Number
1	T10208 Conduit Support Kit
2	T10209 25 x 25mm Rail Clamp
3	T10210 32mm Diameter Conduit Kit Clamp



LUBRICATION

To ensure that the Traverser maintains its high level of performance and low level of maintenance, the linear slide should be lubricated at regular intervals. The recommended interval is every 100km, however this figure is dependent on environment and conditions of use and may vary. The distance travelled by the Traverser can be monitored using the Traverser Setup software



Part No	Description
T10221	Grease Gun Kit (Supplied without grease cartridge)
T10222	Grease Cartridge 70g